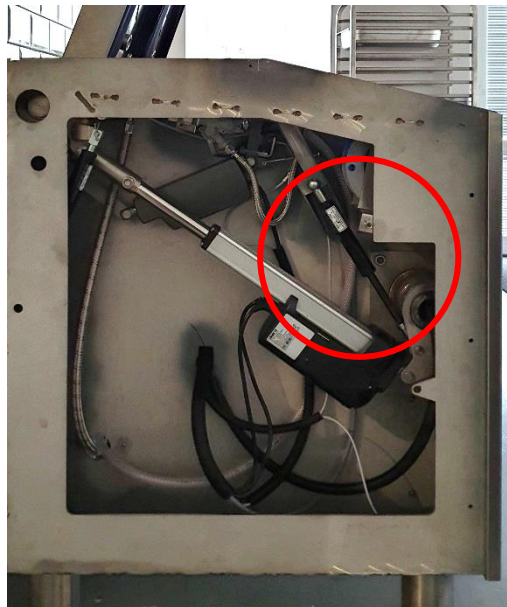


Replacement of heating elements

- 1) Open the left leg of the device



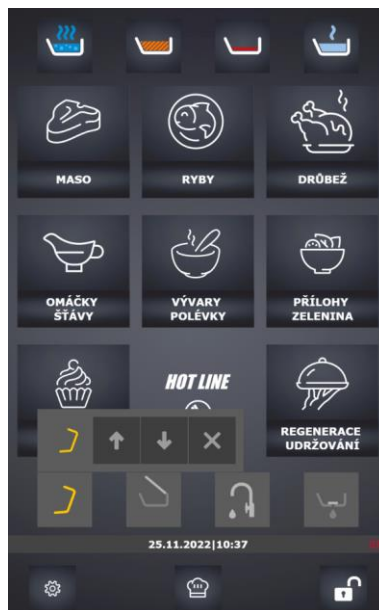
- 2) Remove the gas spring
 - a. Gas spring is only for machines JIPA JUMP 101 D, JIPA JUMP 151, JIPA JUMP 151 F, JIPA JUMP 151 P, JIPA JUMP 201, JIPA JUMP 201 F, JIPA JUMP 251
 - b. With the JIPA JUMP 101 D machines, the pan must be held after removing the gas spring so that it does not overturn



- 3) Remove the shower drum



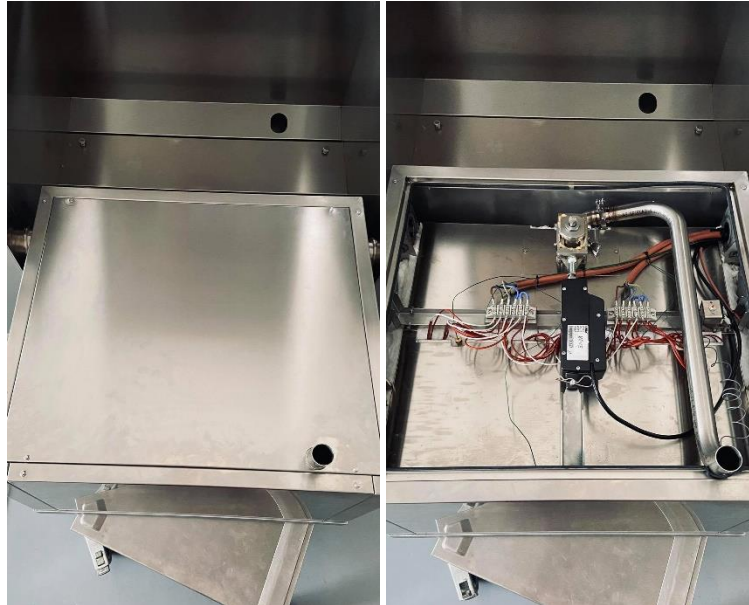
- 4) Fold the pan to a vertical position



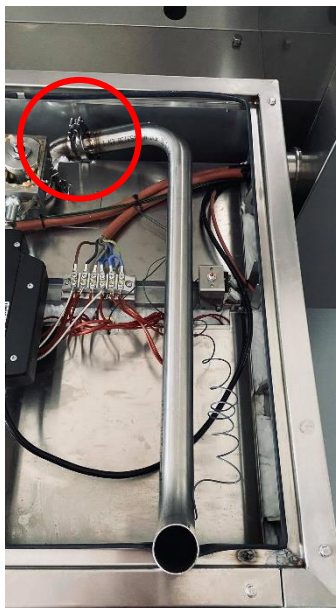
- 5) Remove the cotter pin from the engine and put the pan on a pallet or other pad



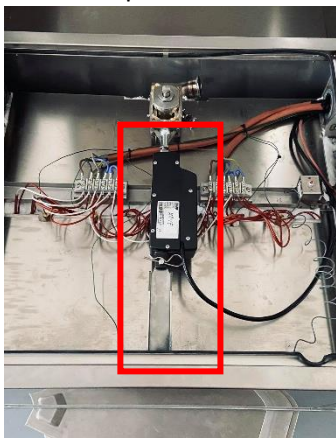
6) Remove the back plate of the bath



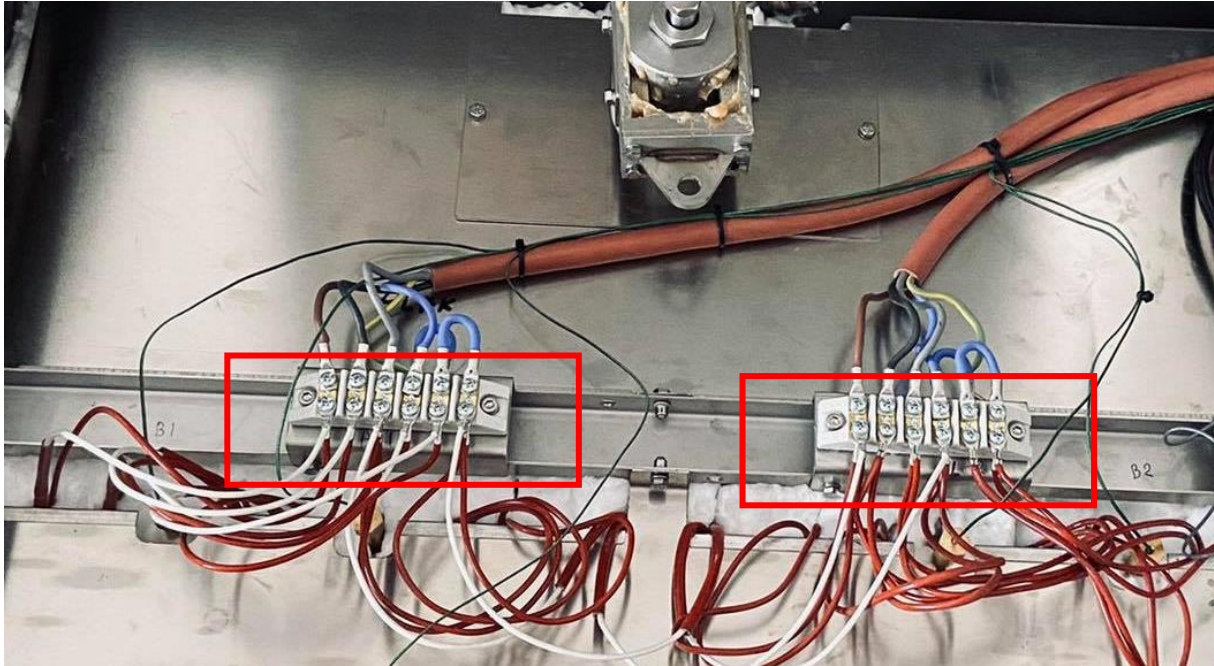
7) Dismantle the waste pipe



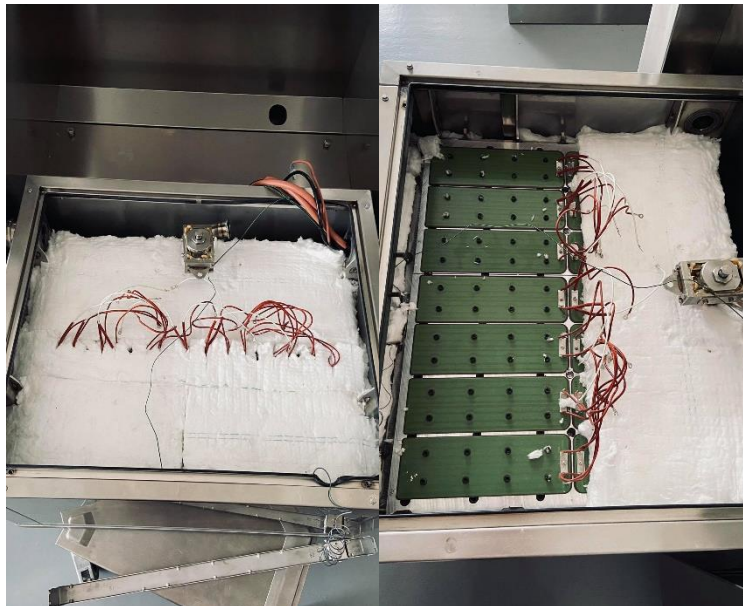
8) Disconnect the waste engine from the pins and unscrew the motor bracket



9) Disconnect the power supply of the heating elements



10) Finally, remove the cover plates, insulation and you can replace the heating elements

**Notes**

- The surface under the heating elements must be properly cleaned.
- When replacing screws, white ceramic paste must always be used.
- The tightening torque of the strength bolts is **9.7 Nm**.